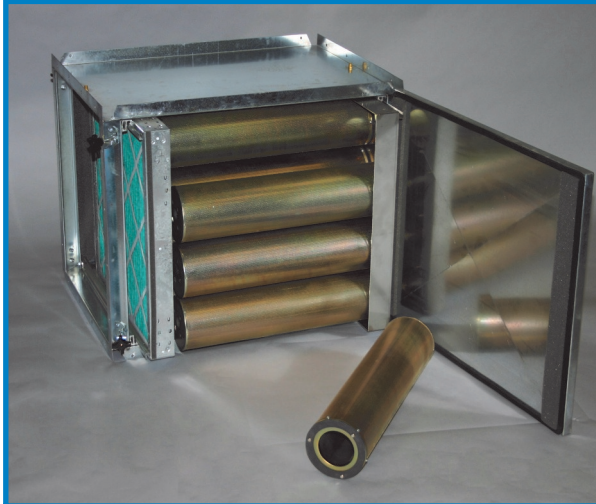
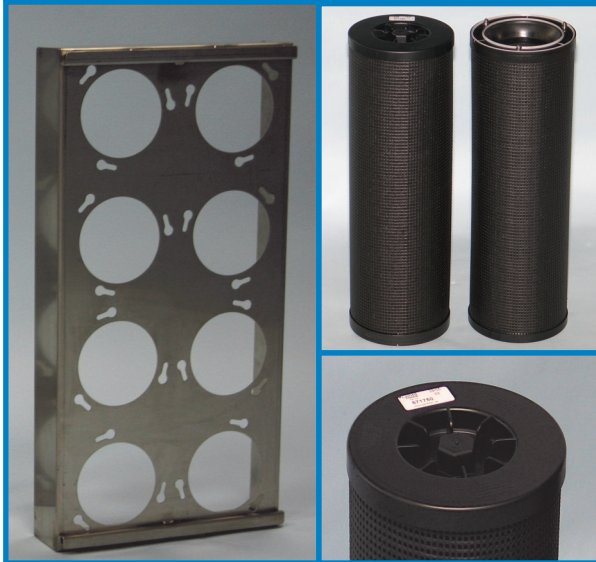


camsorb® canister glide/pack®

Side-Access Glide/Pack® Housing For Cylindrical Sorbent Canisters



Combines high-capacity sorbent canisters with side-access housings for large system gaseous contaminant control.



Cylindrical sorbent canisters attach to an easy-slide holding frame for installation into a Camsorb Glide/Pack side-access housing (top). Standard plastic sorbent canisters (middle right) mount to the frame with a unique bayonet bolt mount. A tool is provided that tightens the cylinder to the frame and ensues an air tight seal (see Product Sheet 2112 for cylinder information). (Housing above shown with optional metal cylinders and MERV 7 prefilter).

Camfil Farr side-access filter housings for cylindrical sorbent canisters are recommended for high gas/vapor load make-up air and recirculation applications. Up to 96 pounds of impregnated carbon per 2000 cfm of system capacity and a gasketed seal provides a higher capacity and removal efficiency than other adsorbent systems. Each Camfil Farr Camsorb Glide/Pack:

- Includes a unique sorbent frame bayonet mounting system that limits sorbent canister air bypass
- Includes two extruded aluminum filter slide tracks. Each track includes a polypropylene fin seal on the filter track to limit air bypass. One track allows for the installation of a universal holding frame for the application of a 2" deep particulate prefilter or a downstream carbon dusting filter. The main track is designed to accommodate the installation of a frame with Camsorb cylindrical canisters (up to 96 pounds of sorbent media for each 24" by 24" opening)
- Is constructed of 16-gauge aluminized steel and includes pre-drilled standing flanges to mate to existing housings (multi-stage filtration), or directly to HVAC equipment. All components are weatherproof without modification for interior or exterior installation
- Includes dual-access doors, utilizing high-memory sponge neoprene door gaskets to ensure door-to-filter seal and allow filter service from either side of the unit. The doors swing open and are engineered to be square to the housing flange. UV resistant 'star-style' knobs ensure a renewed tight seal each time the access doors are opened and closed
- Excellent noise attenuation (when matched with Camfil Farr cylindrical canisters, sound attenuation is comparable to conventional silencers and sound absorbing dampers).

Camsorb cylindrical canisters, ordered separately, are available for removal of a wide variety of gaseous contaminants. Consult Camfil Farr Product Sheet 2112 for information on specific contaminant removal. Specialized sorbents are also available. Please consult your local Camfil Farr Representative or contact the factory.



Camfil Farr	Product sheet
Camsorb® Canister Glide/Pack® Side-Access Housing	2118 - 0607
Camfil Farr—clean air solutions	

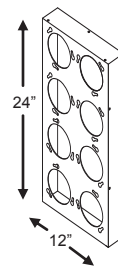
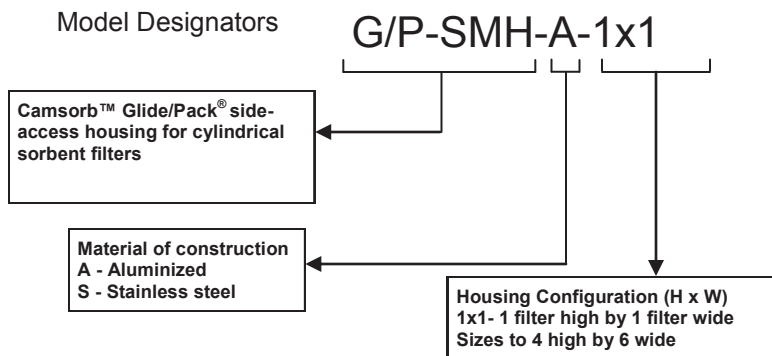
PERFORMANCE DATA
Housing Dimensions & Capacities

Camsorb® Canister Glide/Pack®
SIDE-ACCESS HOUSING FOR CYLINDRICAL SORBENT CANISTERS

NUMBER OF FILTERS HIGH	HEIGHT	NUMBER OF FILTERS WIDE											
		1/2	1	1-1/2	2	2-1/2	3	3-1/2	4	4-1/2	5	5-1/2	6
1/2	1' 3-1/4"	—	1000	—	2000	—	3000	—	4000	—	5000	—	6000
1	2' 3-1/4"	1000	2000	3000	4000	5000	6000	7000	8000	9000	10000	11000	12000
1-1/2	3' 3-1/2"	—	3000	—	6000	—	9000	—	12000	—	15000	—	18000
2	4' 3-1/2"	2000	4000	6000	8000	10000	12000	14000	16000	18000	20000	22000	24000
2-1/2	5' 3-3/4"	—	5000	—	10000	—	15000	—	20000	—	25000	—	30000
3	6' 3-3/4"	—	6000	9000	12000	15000	18000	21000	24000	27000	30000	33000	36000
3-1/2	7' 4"	—	7000	—	14000	—	21000	—	28000	—	35000	—	42000
4	8' 4"	—	8000	12000	16000	20000	24000	28000	32000	36000	40000	44000	48000
WIDTH		1' 0"	2' 0"	3' 0"	4' 0"	5' 0"	6' 0"	7' 0"	8' 0"	9' 0"	10' 0"	11' 0"	12' 0"

Housing depth is 33-3/4".

Typical sorbent volume for a 1 x 1 configuration is 80 or 96 pounds of sorbent for 18" or 24" cylindrical canisters respectively (cfm-201 sorbent only, consult factory for other sorbent weights). Sorbent residence time may be increased, improving gaseous removal efficiency and system capacity by de-rating airflow capacities. Consult Camsorb cylindrical sorbent canister product Sheet 2112 for sorbent canister selection. Sorbent canisters ordered separately. Camsorb cylindrical sorbent canisters are also known by the trade name of Camcarb (in Europe).



Camfil Farr Camsorb Glide/Pack housings incorporate half-size holding frames as detailed above. Housings are available in configurations from 1/2 x 1 (12" x 24") to 4 high by 6 wide (120" x 144").

SPECIFICATIONS

1.0 General

1.1 - Housing shall be dual-stage filter system consisting of 16-gauge aluminized steel enclosure, cylindrical canister mounting frames, integral prefilter frame and extruded aluminum holding frame tracks.

1.2 - Sizes shall be as noted on enclosed drawings or other supporting materials.

2.0 Construction

2.1 - The housing shall be constructed of 16-gauge aluminized steel with pre-drilled standing flanges to facilitate attachment to other system components. Corner posts of Z-channel construction shall ensure dimensional adherence. The housing shall be weatherproof and suitable for rooftop/outdoor installation. Housing depth shall not exceed 34".

2.2 - Two extruded aluminum frame support tracks shall be integral components of housing construction. Each track shall include a polypropylene fin seal to limit frame air bypass.

2.3 - Dual access doors, swing-open type, shall include high-memory sponge neoprene gasket to facilitate a door-to-filter seal. Each door shall be equipped with adjustable and replaceable positive sealing UV-resistant star-style knobs and replaceable door hinges.

2.4 - A prefilter holding frame, of 16-gauge steel, shall facilitate a 2" deep filter for prefiltration, or service as a dusting filter.

Camfil Farr has a policy of continuous research, development and product improvement. We reserve the right to change designs and specifications without notice.

Camfil Farr, Inc.

Washington NC Tel: (252) 975-1141 Fax: (252) 975-1041

Corporate Locations:

United States Tel: (973) 616-7300 Fax: (973) 616-7771

Canada Tel: (450) 629-3030 Fax: (450) 662-6035

E-mail: camfilfarr@camfilfarr.com

© Camfil Farr

<http://www.camfilfarr.com>

2.5 - The housing shall include a cylindrical canister mounting frame, of 14-gauge aluminized steel, to facilitate the installation of Camfil Farr Camsorb Camcarb (18", 24") cylinders. Cylindrical canister holding frame shall be true to ensure cylindrical to frame seal and limit air bypass.

2.6 - A pneumatic pressure fitting shall be included to allow evaluation of pressure drop across filter assembly.

3.0 Performance

3.1 - System pressure drop shall not exceed (0.63, 0.59)" w.g. at a velocity of 500 fpm when mounted to matching cylinder holding frame.

3.2 - Accuracy of pneumatic pressure fitting shall be accurate within ± 3% at 0.6" w.g.

3.3 - Manufacturer shall provide evidence of facility certification to ISO 9001:2000.

** Items in parentheses () require selection.*

